

PLAN NLT 19

Deposited in the Land Title Office at New Aiyansh, B.C. this 6th day of AUGUST, 2004.

Diane Craft
Registrar

NISGA'A LANDS

REFERENCE PLAN OF DISTRICT LOT 7288
CASSIAR DISTRICT, PLAN NLT10
GINGOLX VILLAGE LANDS

PURSUANT TO SECTION 72(1)(a) OF THE NISGA'A LAND TITLE ACT
B.C.G.S. 103I.091 & 103P.001

Scale 1:7500



LEGEND

Bearings are NAD83 grid bearings, derived from differential carrier phase GPS observations and are referred to the central meridian of UTM Zone 9 (129° West). To obtain local astronomic bearings referred to the meridian through Post #7, subtract 0° 46' 20".

- ⊙ denotes Standard Capped Post found
- ⊗ denotes Standard Capped Post placed
- denotes Standard Iron Post placed
- △ denotes Traverse Station

This plan shows ground level distances. Prior to computation of UTM coordinates, multiply by the mean combined factor 0.999625.

The UTM coordinates and estimated network horizontal accuracy are derived from GPS dual frequency static baseline ties to the Terrace ACP. The estimated network horizontal accuracy at the 95% confidence level is 0.1 metres.

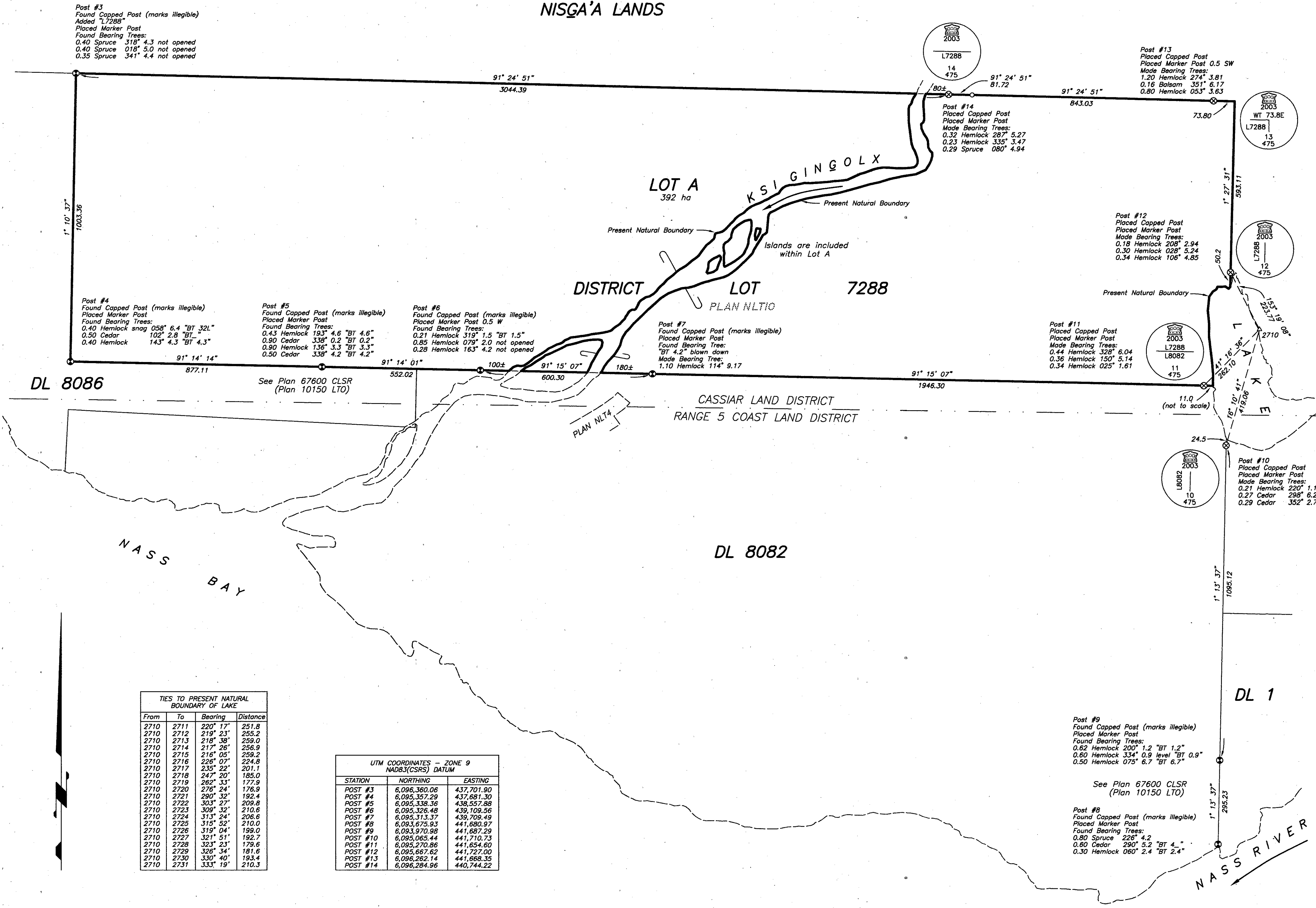
Marker Posts are 1.5 metre long angle iron with an attached plate embossed "LEGAL SURVEY POST NEAR THIS MARKER, DO NOT DISTURB".

All distances are in metres and decimals thereof.

Bearings to bearing trees are magnetic.

Natural boundaries were digitized from TRIM II digital orthophotos except where field survey ties are shown.

This Plan lies within the Kitimat - Stikine Regional District.



Post #3
Found Capped Post (marks illegible)
Added "L7288"
Placed Marker Post
Found Bearing Trees:
0.40 Spruce 318° 4.3 not opened
0.40 Spruce 018° 5.0 not opened
0.35 Spruce 341° 4.4 not opened

Post #4
Found Capped Post (marks illegible)
Placed Marker Post
Found Bearing Trees:
0.40 Hemlock snag 058° 6.4 "BT 32L"
0.50 Cedar 102° 2.6 "BT"
0.40 Hemlock 143° 4.3 "BT 4.3"

Post #5
Found Capped Post (marks illegible)
Placed Marker Post
Found Bearing Trees:
0.43 Hemlock 193° 4.6 "BT 4.6"
0.90 Cedar 338° 0.2 "BT 0.2"
0.90 Hemlock 138° 3.3 "BT 3.3"
0.50 Cedar 338° 4.2 "BT 4.2"

Post #6
Found Capped Post (marks illegible)
Placed Marker Post 0.5 W
Found Bearing Trees:
0.21 Hemlock 319° 1.5 "BT 1.5"
0.85 Hemlock 079° 2.0 not opened
0.28 Hemlock 163° 4.2 not opened

Post #7
Found Capped Post (marks illegible)
Placed Marker Post
Found Bearing Tree:
"BT 4.2" blown down
Made Bearing Tree:
1.10 Hemlock 114° 9.17

Post #13
Placed Capped Post
Placed Marker Post 0.5 SW
Made Bearing Trees:
1.20 Hemlock 274° 3.81
0.16 Balsam 351° 6.17
0.80 Hemlock 053° 3.63

Post #14
Placed Capped Post
Placed Marker Post
Made Bearing Trees:
0.32 Hemlock 287° 5.27
0.23 Hemlock 335° 3.47
0.29 Spruce 080° 4.94

Post #12
Placed Capped Post
Placed Marker Post
Made Bearing Trees:
0.18 Hemlock 208° 2.94
0.30 Hemlock 028° 5.24
0.34 Hemlock 106° 4.85

Post #11
Placed Capped Post
Placed Marker Post
Made Bearing Trees:
0.44 Hemlock 328° 6.04
0.36 Hemlock 150° 5.14
0.34 Hemlock 025° 1.61

Post #10
Placed Capped Post
Placed Marker Post
Made Bearing Trees:
0.21 Hemlock 220° 1.17
0.27 Cedar 298° 6.23
0.29 Cedar 352° 2.77

Post #9
Found Capped Post (marks illegible)
Placed Marker Post
Found Bearing Trees:
0.62 Hemlock 200° 1.2 "BT 1.2"
0.60 Hemlock 334° 0.9 level "BT 0.9"
0.50 Hemlock 075° 6.7 "BT 6.7"

Post #8
Found Capped Post (marks illegible)
Placed Marker Post
Found Bearing Trees:
0.80 Spruce 226° 4.2
0.60 Cedar 290° 5.2 "BT 4.4"
0.30 Hemlock 060° 2.4 "BT 2.4"

TIES TO PRESENT NATURAL BOUNDARY OF LAKE

From	To	Bearing	Distance
2710	2711	220° 17'	251.8
2710	2712	219° 23'	255.2
2710	2713	218° 38'	259.0
2710	2714	217° 36'	256.9
2710	2715	216° 05'	259.2
2710	2716	226° 07'	224.8
2710	2717	235° 22'	201.1
2710	2718	247° 20'	185.0
2710	2719	262° 33'	177.9
2710	2720	276° 24'	176.9
2710	2721	290° 32'	192.4
2710	2722	303° 27'	209.8
2710	2723	309° 32'	210.6
2710	2724	313° 24'	206.6
2710	2725	315° 52'	210.0
2710	2726	319° 04'	199.0
2710	2727	321° 51'	192.7
2710	2728	323° 23'	179.6
2710	2729	326° 34'	181.6
2710	2730	330° 40'	193.4
2710	2731	333° 19'	210.3

UTM COORDINATES - ZONE 9
NAD83(CSRS) DATUM

STATION	NORTHING	EASTING
POST #3	6,096,360.06	437,701.90
POST #4	6,095,357.29	437,881.30
POST #5	6,095,338.36	438,557.88
POST #6	6,095,326.48	439,109.56
POST #7	6,095,313.37	439,709.49
POST #8	6,093,675.93	441,680.97
POST #9	6,093,970.98	441,887.29
POST #10	6,095,065.44	441,710.73
POST #11	6,095,270.86	441,854.60
POST #12	6,095,667.62	441,727.00
POST #13	6,096,262.14	441,868.35
POST #14	6,096,264.96	440,744.22

REGISTERED OWNER:
NISGA'A VILLAGE OF GINGOLX

P. Platon
Authorized Signatory

S. Moore
Authorized Signatory

I, Allan R. Hardie, a British Columbia land surveyor, of the city of Victoria, in British Columbia, certify that I was present at and personally superintended the survey represented by this plan, and that the survey and plan are correct. The field survey was completed on the 16th day of October, 2003. The plan was completed and checked, and the checklist filed under #11957, on the 21st day of February, 2004.

Allan R. Hardie