

**PLAN OF SUBDIVISION OF PART OF BLOCK J,  
DISTRICT LOT 4012, PART OF THE S. W. QUARTER  
DISTRICT LOT 2626, AND PART OF LOT A,  
DISTRICT LOT 4013, ALL OF PLAN NLT7,  
CASSIAR DISTRICT,  
NEW AIYANSH VILLAGE LANDS.**

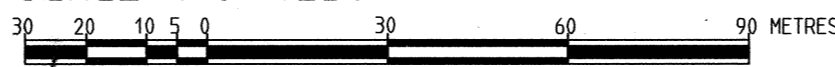
PLAN NLT 20

DEPOSITED IN THE NISGA'A LAND TITLE OFFICE  
AT NEW AIYANSH, B. C. THIS 7<sup>th</sup>  
DAY OF September 2004

**B. C. G. S. 103P. 015**

*Diana Crapp*  
REGISTRAR

SCALE 1 : 1250



**LEGEND**

UTM (NAD83 CSRS) GRID BEARINGS ARE DERIVED FROM GPS OBSERVATIONS  
AND ARE REFERRED TO 129° WEST LONGITUDE, THE CENTRAL MERIDIAN OF ZONE 9.

UTM COORDINATES SHOWN HEREON ARE DERIVED FROM TERRACE INTEGRATED SURVEY AREA  
CONTROL MONUMENT No. 95H1875, HAVING PUBLISHED COORDINATES OF: N6, 040, 733. 123  
E525, 343. 752

TO OBTAIN LOCAL ASTRONOMIC BEARINGS REFERRED TO THE MERIDIAN THROUGH  
THE OIP AT THE NORTH WEST CORNER OF LOT 226, SUBTRACT 00°03'17".

THIS PLAN SHOWS GROUND LEVEL DISTANCES, PRIOR TO COMPUTATION  
OF UTM COORDINATES, MULTIPLY BY COMBINED FACTOR 0.999600.

All distances are in metres  
Bearings to bearing trees are magnetic.

- STANDARD CAPPED POST FOUND
- ⊗ STANDARD CAPPED POST PLACED
- STANDARD IRON POST FOUND
- STANDARD IRON POST PLACED



NISGA'A VILLAGE OF NEW AIYANSH  
(REGISTERED OWNER)

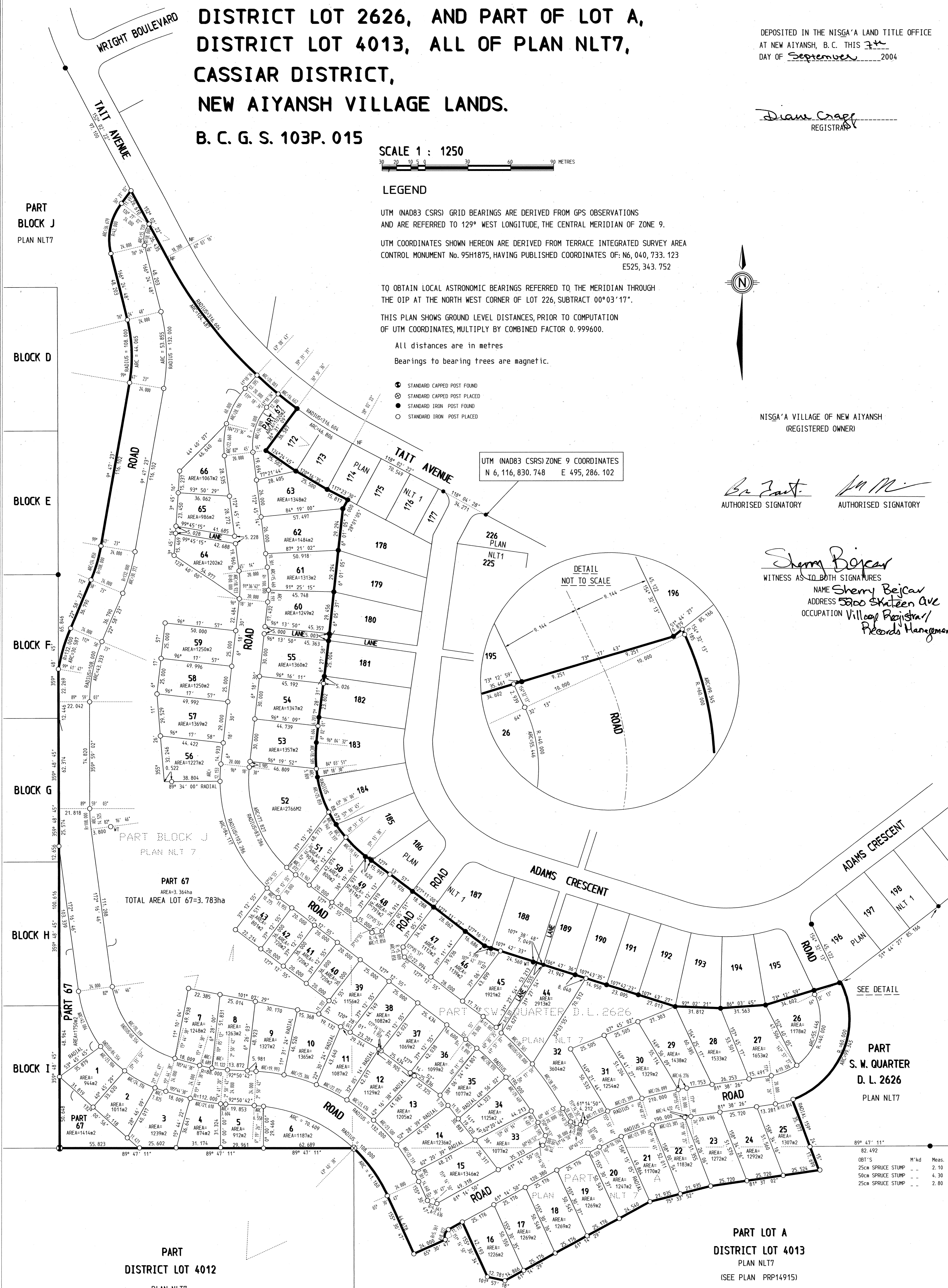
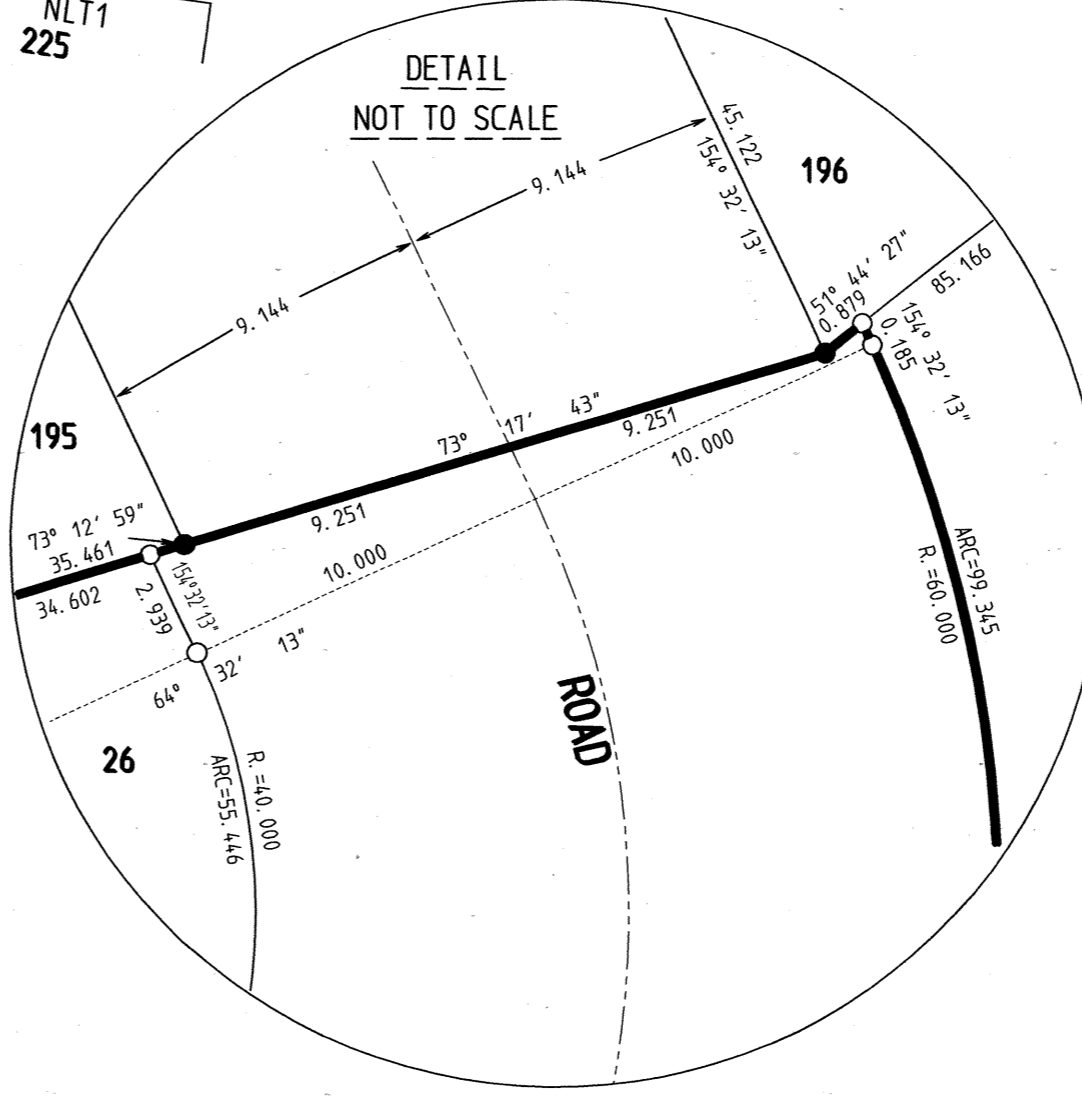
*Be Zeit*  
AUTHORISED SIGNATORY

*NA M*  
AUTHORISED SIGNATORY

*Sherry Bejcar*  
WITNESS AS TO BOTH SIGNATURES

NAME *Sherry Bejcar*  
ADDRESS *5000 Skatzen Ave*  
OCCUPATION *Village Registrar/*  
*Records Management*

UTM (NAD83 CSRS) ZONE 9 COORDINATES  
N 6, 116, 830. 748 E 495, 286. 102



I, DONALD P. HIGHE, A BRITISH COLUMBIA  
LAND SURVEYOR OF TERRACE, IN BRITISH COLUMBIA,  
CERTIFY THAT I WAS PRESENT AT AND PERSONALLY  
SUPERINTENDED THE SURVEY REPRESENTED BY THIS  
PLAN, AND THAT THE SURVEY AND PLAN ARE CORRECT.

THE FIELD SURVEY WAS COMPLETED ON THE 30th DAY OF SEPTEMBER 2003.  
THE PLAN WAS COMPLETED AND CHECKED, AND THE CHECKLIST FILED  
UNDER ECP-10364, ON THE 8th DAY OF JANUARY 2004.

*Donald P. Highe*  
DONALD P. HIGHE B.C.L.S.

APPROVED PURSUANT TO THE NISGA'A LAND TITLE ACT  
DATED THIS 7<sup>th</sup> DAY OF SEP 2004.

*[Signature]*  
APPROVING OFFICER, NISGA'A NATION

**PART LOT A  
DISTRICT LOT 4013  
PLAN NLT7  
(SEE PLAN PRP14915)**

OBJ'S	M'kd	Meas.
25cm SPRUCE STUMP	--	2.10
50cm SPRUCE STUMP	--	4.30
25cm SPRUCE STUMP	--	2.80

HIGH SURVEYS  
B. C. LAND SURVEYORS  
BOX 545 TERRACE, B. C.  
V8G 4B5 PHONE 635-3227

JOB NUMBER: 03-009E

THIS PLAN LIES WITHIN THE KITIMAT - STIKINE REGIONAL DISTRICT.