

**PLAN OF SPECIAL SURVEY OF
LOTS 1 TO 12, LOTS 15 TO 28,
LOTS 30 TO 32, LOTS 37 TO 65, AND LOT 285,
PLAN NLT1, NEW AIYANSH VILLAGE LANDS,
DISTRICT LOT 4012,
CASSIAR DISTRICT**

PLAN NLT 21

Deposited in the Land Title Office at New Aiyansh, B.C.
this 26th day of November, 2004.

Diame Cragg
Registrar



B.C.G.S. 103P.025

Scale 1:1000



LEGEND

Bearings are NAD83 grid bearings, derived from differential carrier phase GPS observations and are referred to the central meridian of UTM Zone 9 (129° West).

To obtain local astronomic bearings referred to the meridian through the most westerly corner of Lot 34, subtract 0° 03' 53".

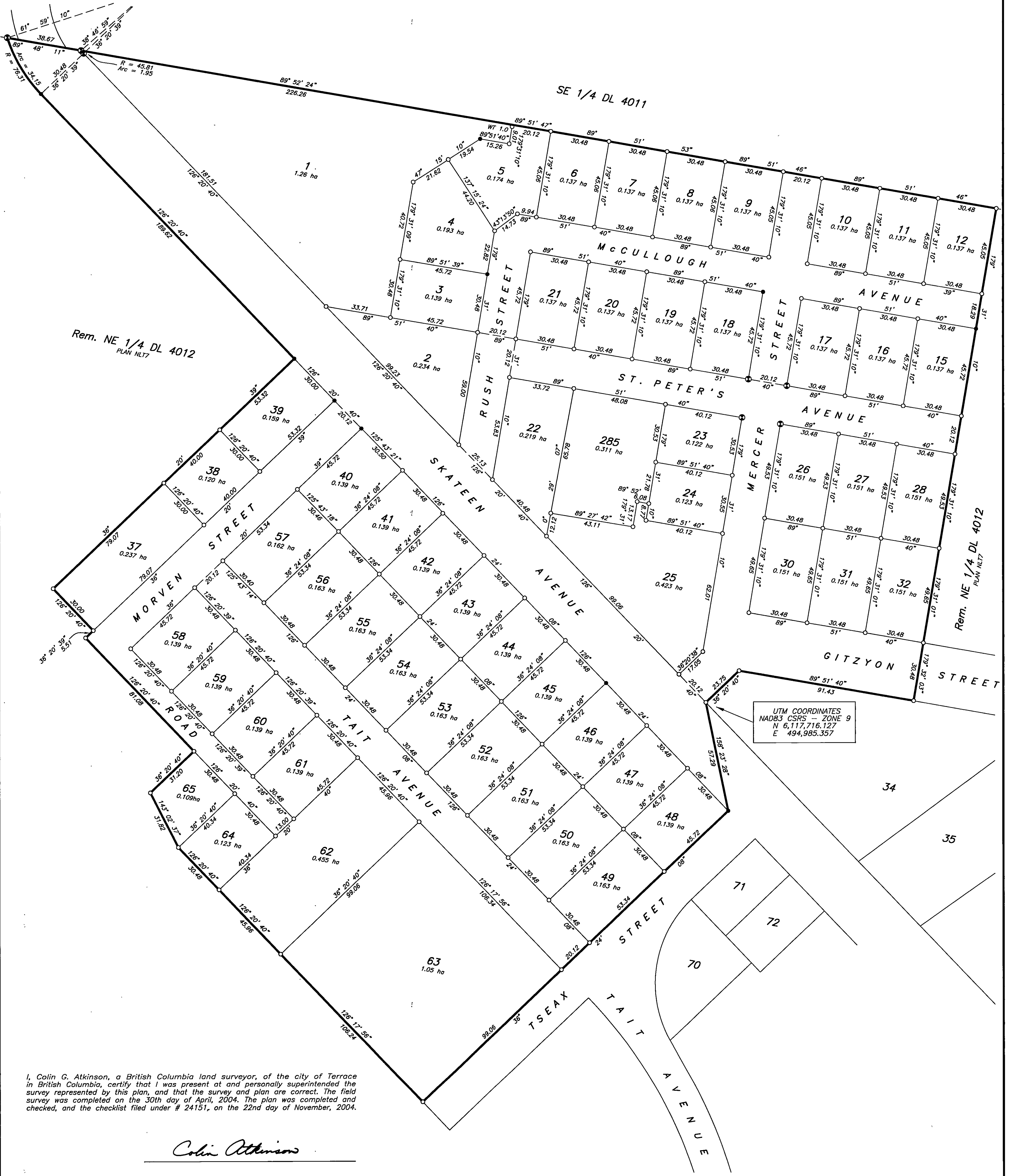
- ⊙ denotes Standard Capped Post found
- denotes Standard Iron Post found
- denotes Standard Iron Post placed

This plan shows ground level distances. Prior to computation of UTM coordinates, multiply by the mean combined factor 0.999580.

The UTM coordinates and estimated network horizontal accuracy are derived from GPS dual frequency static baseline ties to the Terrace ACP. The estimated network horizontal accuracy at the 95% confidence level is 0.1 metres.

All distances are in metres and decimals thereof.

This Plan lies within the Kitimat - Stikine Regional District.



I, Colin G. Atkinson, a British Columbia land surveyor, of the city of Terrace in British Columbia, certify that I was present at and personally superintended the survey represented by this plan, and that the survey and plan are correct. The field survey was completed on the 30th day of April, 2004. The plan was completed and checked, and the checklist filed under # 24151, on the 22nd day of November, 2004.

Colin Atkinson