

PLAN NLT 22

Deposited in the Land Title Office at New Aiyansh, B.C. this 26th day of November, 2004.

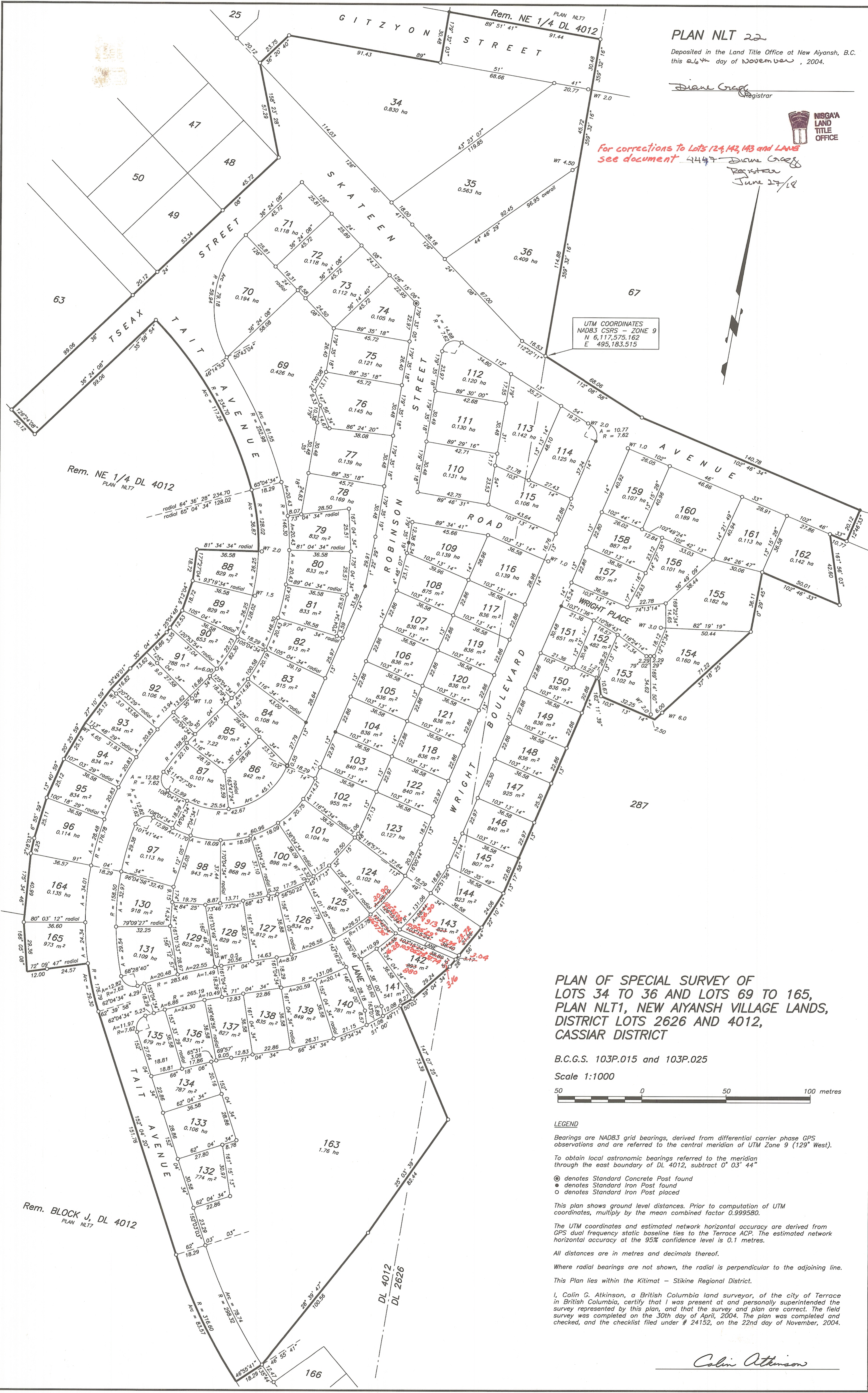
Diane Craig
Registrar



For corrections to Lots 124, 142, 143 and LANE see document 4147

Diane Craig
Registrar
June 27/12

UTM COORDINATES
NAD83 CSRS - ZONE 9
N 6,117,575.162
E 495,183.515



PLAN OF SPECIAL SURVEY OF LOTS 34 TO 36 AND LOTS 69 TO 165, PLAN NLT1, NEW AIYANSH VILLAGE LANDS, DISTRICT LOTS 2626 AND 4012, CASSIAR DISTRICT

B.C.G.S. 103P.015 and 103P.025

Scale 1:1000



LEGEND
Bearings are NAD83 grid bearings, derived from differential carrier phase GPS observations and are referred to the central meridian of UTM Zone 9 (129° West).
To obtain local astronomic bearings referred to the meridian through the east boundary of DL 4012, subtract 0° 03' 44"

● denotes Standard Concrete Post found
● denotes Standard Iron Post found
○ denotes Standard Iron Post placed

This plan shows ground level distances. Prior to computation of UTM coordinates, multiply by the mean combined factor 0.999580.

The UTM coordinates and estimated network horizontal accuracy are derived from GPS dual frequency static baseline ties to the Terrace ACP. The estimated network horizontal accuracy at the 95% confidence level is 0.1 metres.

All distances are in metres and decimals thereof.

Where radial bearings are not shown, the radial is perpendicular to the adjoining line.

This Plan lies within the Kitimat - Stikine Regional District.

I, Colin G. Atkinson, a British Columbia land surveyor, of the city of Terrace in British Columbia, certify that I was present at and personally superintended the survey represented by this plan, and that the survey and plan are correct. The field survey was completed on the 30th day of April, 2004. The plan was completed and checked, and the checklist filed under # 24152, on the 22nd day of November, 2004.

Colin Atkinson