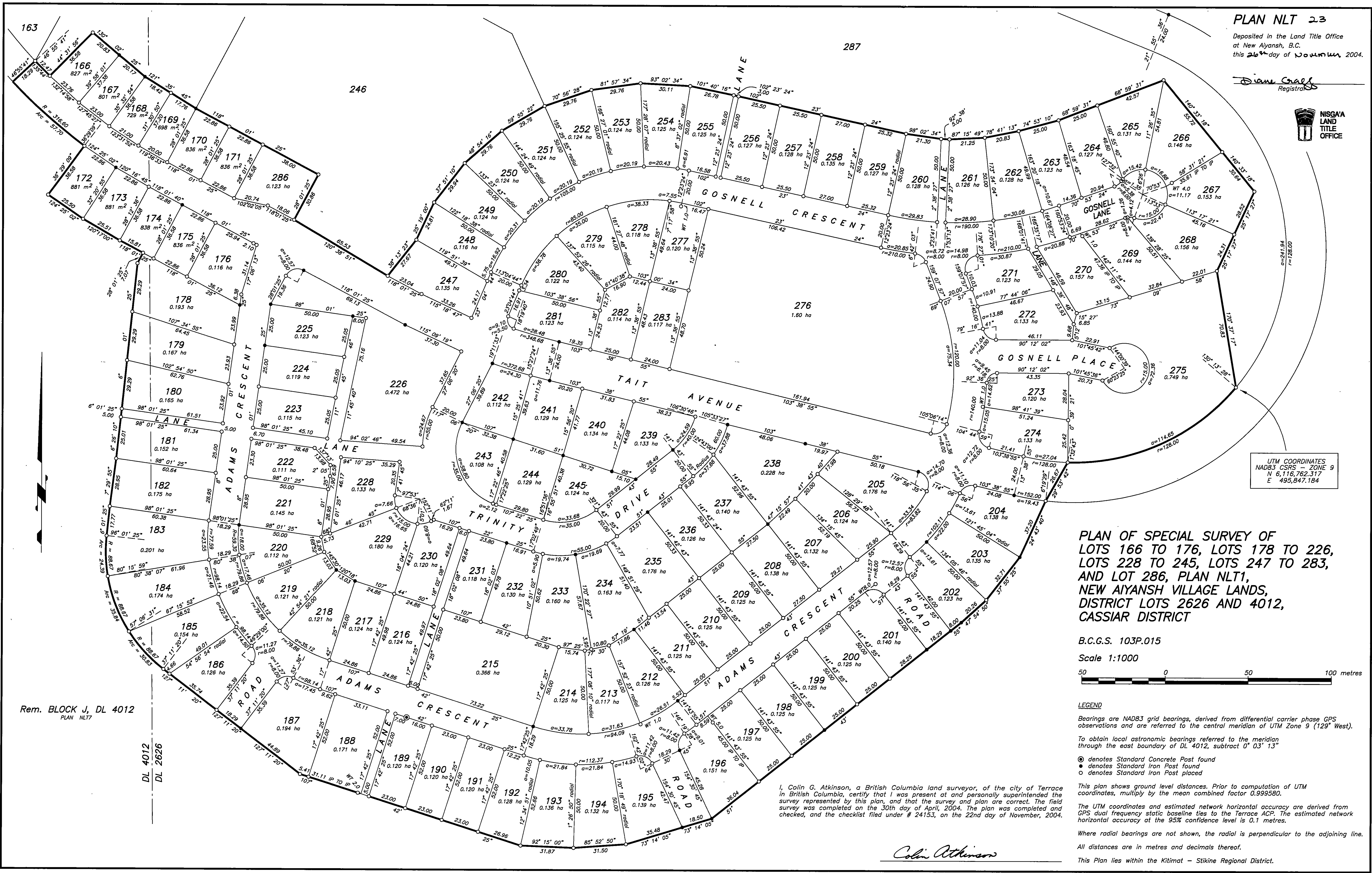


Colin Atkinson
Registrar



UTM COORDINATES
NAD83 CSRS - ZONE 9
N 6,116,762.317
E 495,847.184

**PLAN OF SPECIAL SURVEY OF
LOTS 166 TO 176, LOTS 178 TO 226,
LOTS 228 TO 245, LOTS 247 TO 283,
AND LOT 286, PLAN NLT1,
NEW AIYANSH VILLAGE LANDS,
DISTRICT LOTS 2626 AND 4012,
CASSIAR DISTRICT**

B.C.G.S. 103P.015

Scale 1:1000



LEGEND

Bearings are NAD83 grid bearings, derived from differential carrier phase GPS observations and are referred to the central meridian of UTM Zone 9 (129° West).

To obtain local astronomic bearings referred to the meridian through the east boundary of DL 4012, subtract 0° 03' 13"

- denotes Standard Concrete Post found
- denotes Standard Iron Post found
- denotes Standard Iron Post placed

This plan shows ground level distances. Prior to computation of UTM coordinates, multiply by the mean combined factor 0.999580.

The UTM coordinates and estimated network horizontal accuracy are derived from GPS dual frequency static baseline ties to the Terrace ACP. The estimated network horizontal accuracy at the 95% confidence level is 0.1 metres.

Where radial bearings are not shown, the radial is perpendicular to the adjoining line.

All distances are in metres and decimals thereof.

This Plan lies within the Kitimat - Stikine Regional District.

I, Colin G. Atkinson, a British Columbia land surveyor, of the city of Terrace in British Columbia, certify that I was present at and personally superintended the survey represented by this plan, and that the survey and plan are correct. The field survey was completed on the 30th day of April, 2004. The plan was completed and checked, and the checklist filed under # 24153, on the 22nd day of November, 2004.

Colin Atkinson

Rem. BLOCK J, DL 4012
PLAN NLT7

DL 4012
DL 2626