

**REFERENCE PLAN OF DISTRICT LOT 7289
CASSIAR DISTRICT, PLAN NLT7
NEW AIYANSH VILLAGE LANDS**
PURSUANT TO SECTION 72(1)(a) OF THE NISGA'A LAND TITLE ACT
BCGS 103P.015 & 103P.025



LEGEND:

Bearings are NAD83 grid bearings, derived from differential carrier phase GPS observations and are referred to the central meridian of UTM Zone 9 (129° West). To obtain local astronomic bearings referred to the meridian through the southeast corner of DL 7289, subtract 0° 01' 50".

- ⊙ denotes Control Monument found.
- ⊕ denotes Standard Capped Post found.
- ⊗ denotes Standard Capped Post placed.
- denotes Standard Iron Post found.
- denotes Standard Iron Post placed.

This plan shows ground-level distances. To compute grid distances, multiply ground-level distances by the mean combined factor for the line.

The UTM coordinates and estimated network horizontal accuracy are derived from GPS dual frequency static baseline ties to the Terrace ACP (GCM 722959). The estimated network horizontal accuracy at the 95% confidence level is 0.05 metres.

Marker Posts placed are aluminum and are 1.5m long with an attached plate embossed "LEGAL SURVEY POST NEAR THIS MARKER, DO NOT DISTURB".

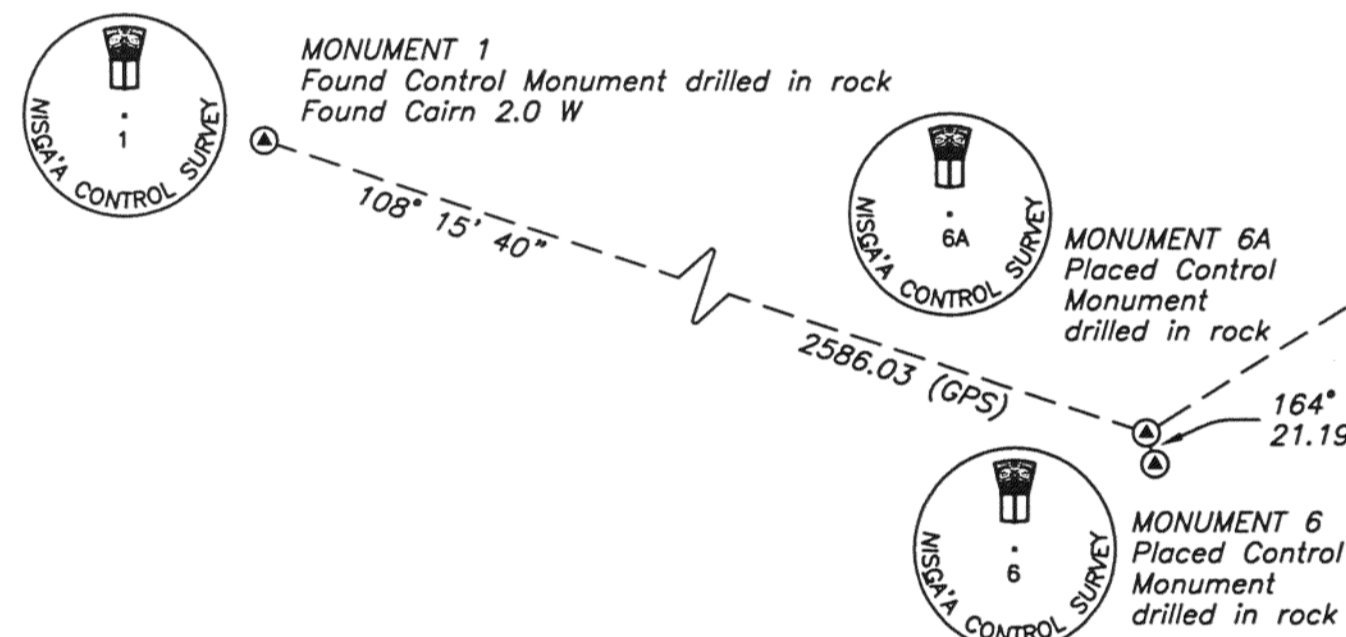
Marker Posts were placed at all Standard Iron Posts found on Plan NR33.

All distances are in metres and decimals thereof.

Bearings to bearing trees are grid bearings.

Natural boundaries were digitized from TRIM II digital orthophotos.

This Plan lies within the Kitimat - Stikine Regional District.



UTM COORDINATES - ZONE 9 - NAD83(CSRS) DATUM			
STATION	NORTHING	EASTING	COMBINED FACTOR
MONUMENT 1	6,117,999.396	493,042.975	0.999593
MONUMENT 6	6,117,169.002	495,503.394	0.999569
MONUMENT 6A	6,117,189.414	495,497.741	0.999570
NE DL2627	6,116,400.98	498,445.36	0.999545
NE DL7289	6,118,004.22	497,636.90	0.999547
NW DL7289	6,118,001.02	496,789.52	0.999558
SE DL7289	6,116,397.44	497,641.62	0.999557
SW DL7289	6,116,393.90	496,837.87	0.999570

I, Allan R. Hardie, a British Columbia land surveyor, of the city of Victoria, in British Columbia, certify that I was present at and personally superintended the survey represented by this plan, and that the survey and plan are correct. The field survey was completed on the 3rd day of August, 2004. The plan was completed and checked, and the checklist filed under #24517, on the 30th day of November, 2004.

Allan R. Hardie

PLAN NLT 25

Deposited in the Land Title Office at New Aiyansh, B.C.
this 21st day of September, 2005

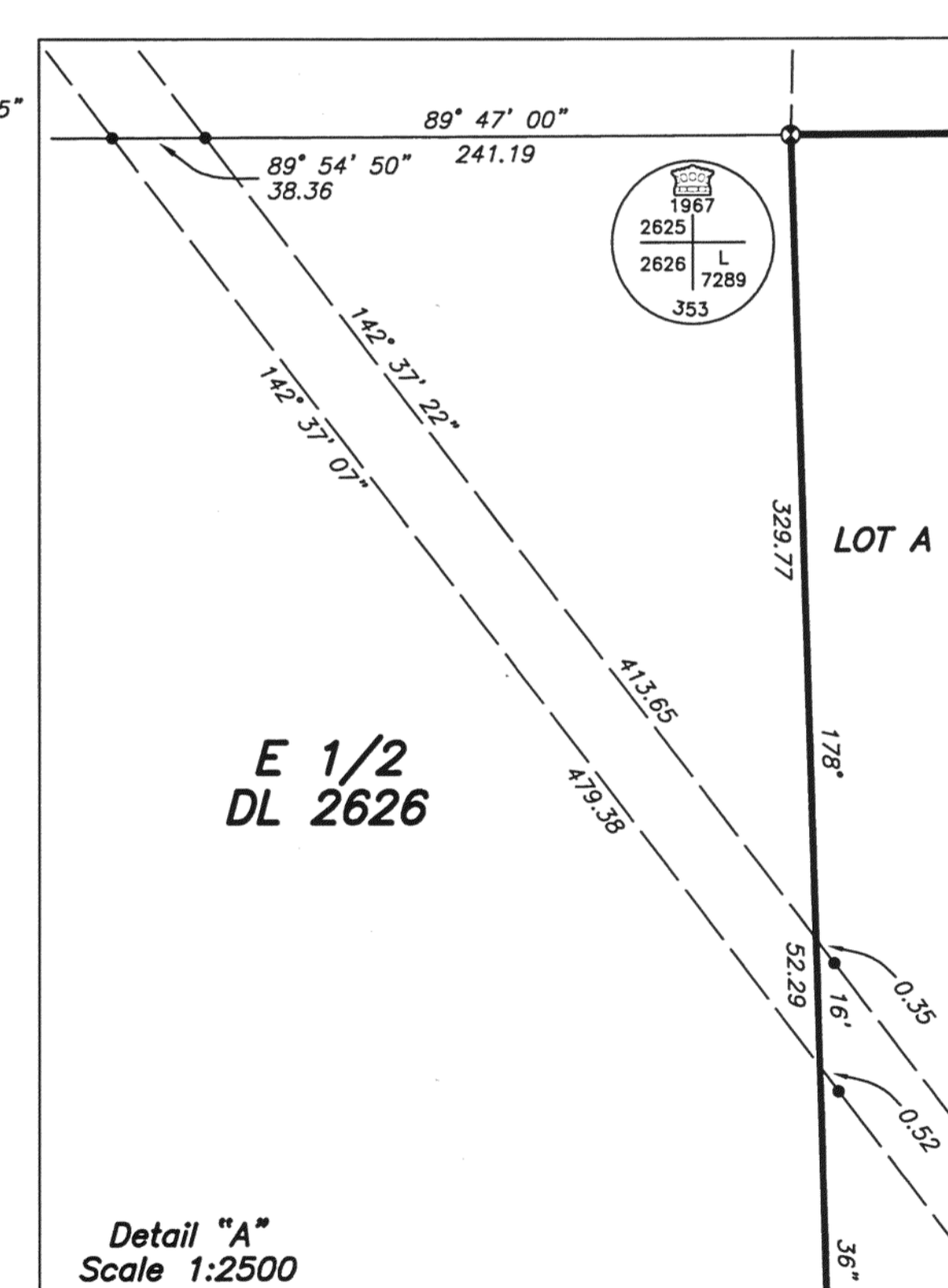
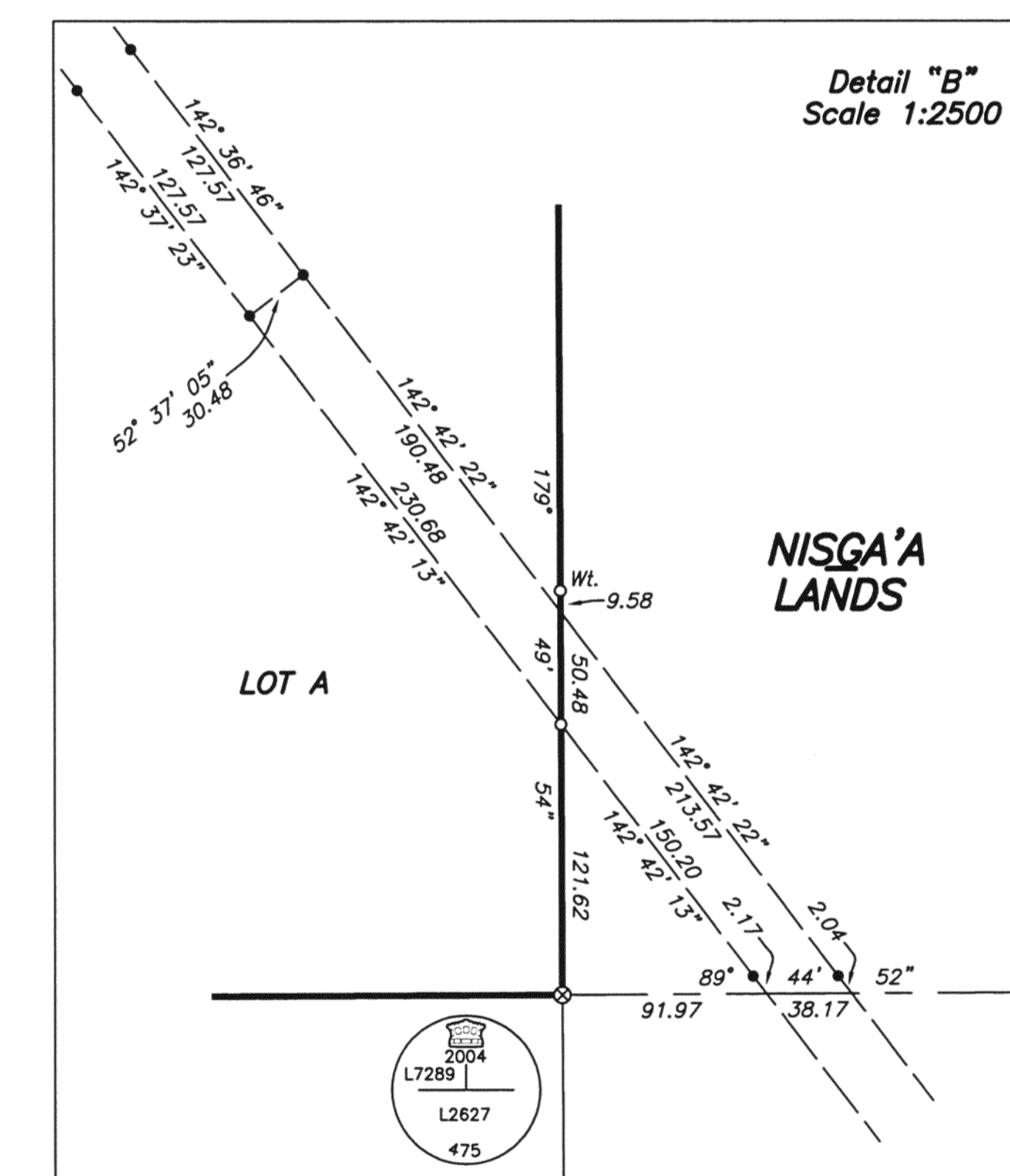
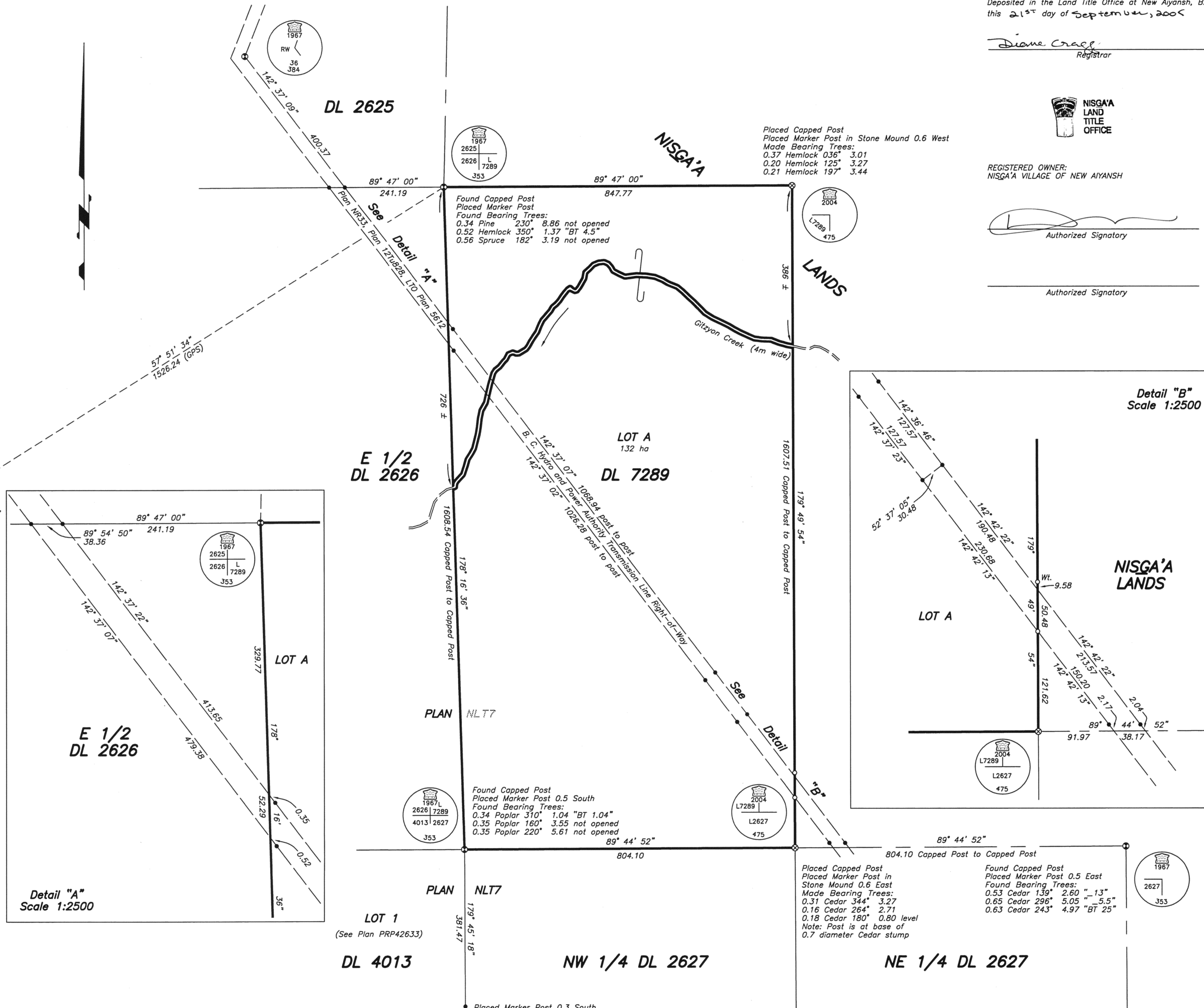
Diane Cragg
Registrar



REGISTERED OWNER:
NISGA'A VILLAGE OF NEW AIYANSH

[Signature]
Authorized Signatory

[Signature]
Authorized Signatory



Placed Capped Post
Placed Marker Post in Stone Mound 0.6 West
Made Bearing Trees:
0.37 Hemlock 036° 3.01
0.20 Hemlock 125° 3.27
0.21 Hemlock 197° 3.44

Found Capped Post
Placed Marker Post
Found Bearing Trees:
0.34 Pine 230° 8.86 not opened
0.52 Hemlock 350° 1.37 "BT 4.5"
0.56 Spruce 182° 3.19 not opened

Found Capped Post
Placed Marker Post 0.5 South
Found Bearing Trees:
0.34 Poplar 310° 1.04 "BT 1.04"
0.35 Poplar 160° 3.55 not opened
0.35 Poplar 220° 5.61 not opened

Placed Capped Post
Placed Marker Post in Stone Mound 0.6 East
Made Bearing Trees:
0.31 Cedar 344° 3.27
0.16 Cedar 264° 2.71
0.18 Cedar 180° 0.80 level
Note: Post is at base of 0.7 diameter Cedar stump

Found Capped Post
Placed Marker Post 0.5 East
Found Bearing Trees:
0.53 Cedar 139° 2.60 "1.13"
0.65 Cedar 296° 5.05 "5.5"
0.63 Cedar 243° 4.97 "BT 25"