

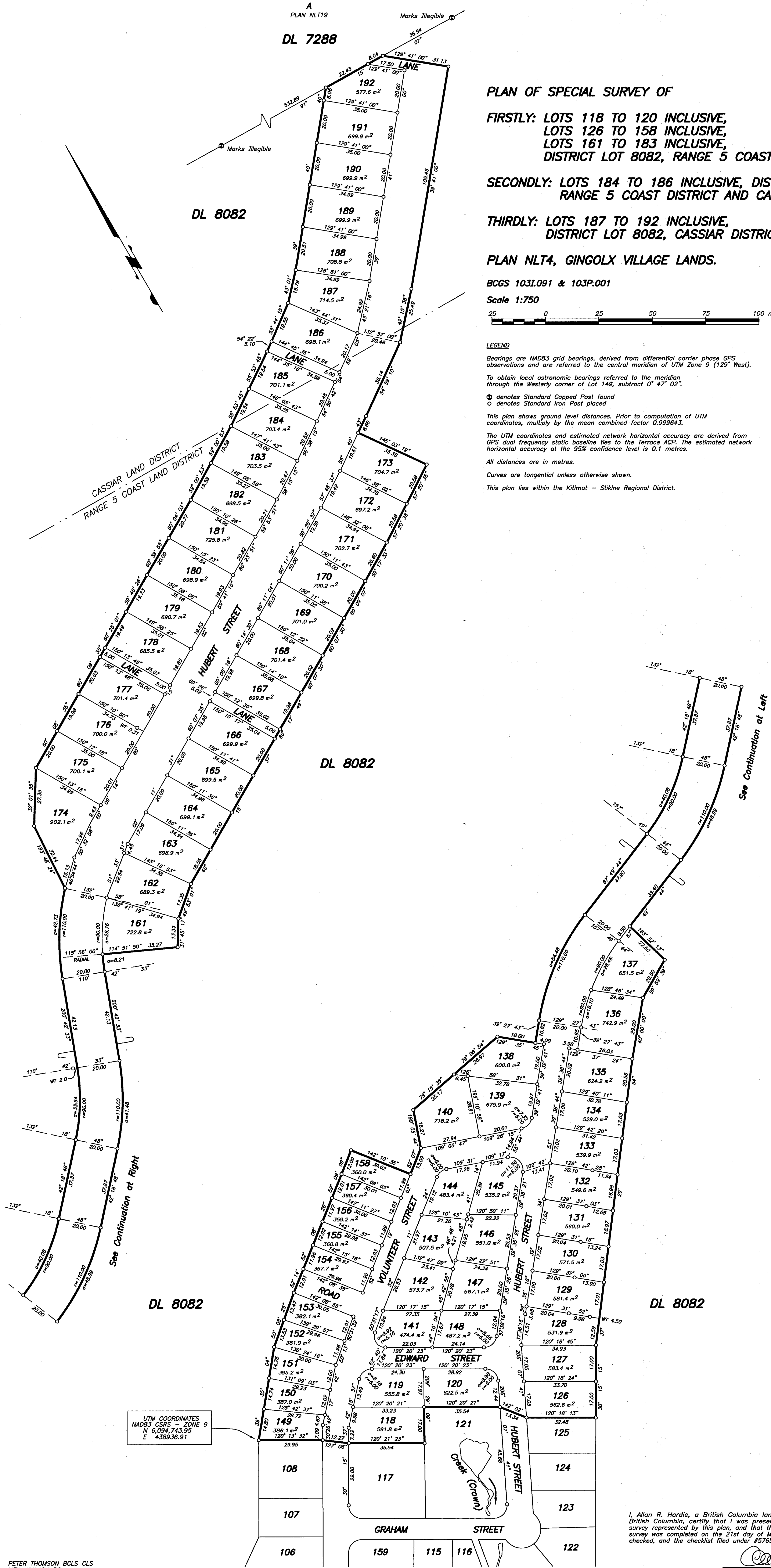
Diana Cragg
 Registrar



PLAN OF SPECIAL SURVEY OF
FIRSTLY: LOTS 118 TO 120 INCLUSIVE,
LOTS 126 TO 158 INCLUSIVE,
LOTS 161 TO 183 INCLUSIVE,
DISTRICT LOT 8082, RANGE 5 COAST DISTRICT,
SECONDLY: LOTS 184 TO 186 INCLUSIVE, DISTRICT LOT 8082,
RANGE 5 COAST DISTRICT AND CASSIAR DISTRICT, AND
THIRDLY: LOTS 187 TO 192 INCLUSIVE,
DISTRICT LOT 8082, CASSIAR DISTRICT,
PLAN NLT4, GINGOLX VILLAGE LANDS.

BCGS 103L.091 & 103P.001
Scale 1:750
 25 0 25 50 75 100 metres

LEGEND
 Bearings are NAD83 grid bearings, derived from differential carrier phase GPS observations and are referred to the central meridian of UTM Zone 9 (129° West).
 To obtain local astronomic bearings referred to the meridian through the Westerly corner of Lot 149, subtract 0° 47' 02".
 ⊙ denotes Standard Capped Post found
 ○ denotes Standard Iron Post placed
 This plan shows ground level distances. Prior to computation of UTM coordinates, multiply by the mean combined factor 0.999643.
 The UTM coordinates and estimated network horizontal accuracy are derived from GPS dual frequency static baseline ties to the Terrace ACP. The estimated network horizontal accuracy at the 95% confidence level is 0.1 metres.
 All distances are in metres.
 Curves are tangential unless otherwise shown.
 This plan lies within the Kitimat - Stikine Regional District.



UTM COORDINATES
 NAD83 CSRS - ZONE 9
 N 6,094,743.95
 E 436936.91

I, Allan R. Hardie, a British Columbia land surveyor, of the city of Victoria, in British Columbia, certify that I was present at and personally supervised the survey represented by this plan, and that the survey and plan are correct. The field survey was completed on the 21st day of March, 2005. The plan was completed and checked, and the checklist filed under #57657, on the 22nd day of November, 2006.

Allan R. Hardie