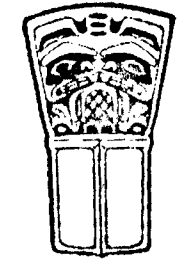


PLAN OF SPECIAL SURVEY OF
 LOTS 117 AND 121, PLAN NLT28,
 LOTS 118 TO 120,
 LOTS 126 TO 128,
 LOTS 134, 135, 141,
 LOTS 143 TO 145,
 LOT 148, LOTS 153 TO 158, PLAN NLT29
 AND ROAD,
 DISTRICT LOT 8082, RANGE 5, COAST DISTRICT,
 GINGOLX VILLAGE LANDS.



NISGA'A
 LAND
 TITLE
 OFFICE

DEPOSITED IN THE NISGA'A LAND TITLE OFFICE
 AT GITLAXT'AMIKS, BC
 THIS 30 DAY OF MARCH 2022

Diane Cross
 REGISTRAR

BCGS 1031.091

SCALE 1:600



THE INTENDED PLOT SIZE OF THIS PLAN IS 559 mm IN WIDTH BY
 864 mm (ANSI D) IN HEIGHT WHEN PLOTTED AT A SCALE OF 1:600.

THIS PLAN LIES WITHIN THE REGIONAL DISTRICT OF KITIMAT STIKINE.

LEGEND

GRID BEARINGS ARE DERIVED FROM GNSS OBSERVATIONS AND ARE
 REFERRED TO 129°W, THE CENTRAL MERIDIAN OF UTM ZONE 9.

THE UTM COORDINATES AND ESTIMATED ABSOLUTE ACCURACY ACHIEVED
 ARE DERIVED FROM NRCAN'S PPP SERVICE.

THIS PLAN SHOWS HORIZONTAL GROUND LEVEL DISTANCES, UNLESS OTHERWISE
 SPECIFIED, TO COMPUTE GRID DISTANCES, MULTIPLY GROUND LEVEL DISTANCES
 BY THE AVERAGE COMBINED FACTOR OF 0.99964642. THE AVERAGE COMBINED FACTOR
 HAS BEEN DETERMINED BASED ON AN ELLIPSOIDAL ELEVATION OF -4.8 METRES.

- DENOTES STANDARD CAPPED POST FOUND
- DENOTES STANDARD IRON POST (IP) FOUND
- DENOTES STANDARD IRON POST SET
- GCP T14 △ DENOTES GNSS CONTROL POINT AND IDENTIFIER

CREEK SHOWN HEREON IS CROWN OWNED.

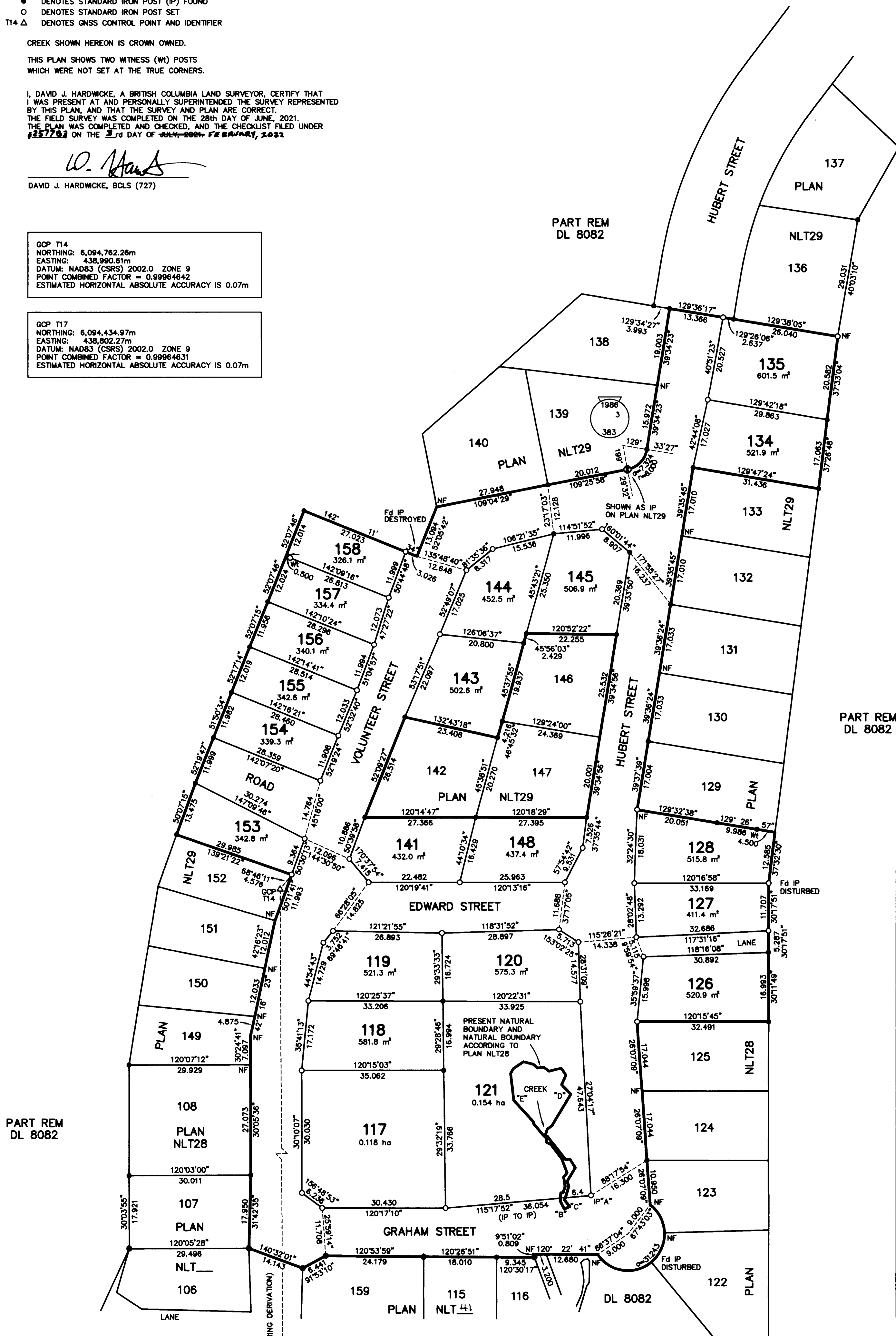
THIS PLAN SHOWS TWO WITNESS (W) POSTS
 WHICH WERE NOT SET AT THE TRUE CORNERS.

I, DAVID J. HARDWICKE, A BRITISH COLUMBIA LAND SURVEYOR, CERTIFY THAT
 I WAS PRESENT AT AND PERSONALLY SUPERINTENDED THE SURVEY REPRESENTED
 BY THIS PLAN, AND THAT THE SURVEY AND PLAN ARE CORRECT.
 THE FIELD SURVEY WAS COMPLETED ON THE 28th DAY OF JUNE, 2021.
 THE PLAN WAS COMPLETED AND CHECKED, AND THE CHECKLIST FILED UNDER
 #227783 ON THE 3rd DAY OF FEBRUARY, 2022.

D. Hardwicke
 DAVID J. HARDWICKE, BCLS (727)

GCP T14
 NORTHING: 6,094,762.28m
 EASTING: 438,990.61m
 DATUM: NAD83 (CSRS) 2002.0 ZONE 9
 POINT COMBINED FACTOR = 0.99964642
 ESTIMATED HORIZONTAL ABSOLUTE ACCURACY IS 0.07m

GCP T17
 NORTHING: 6,094,434.97m
 EASTING: 438,802.27m
 DATUM: NAD83 (CSRS) 2002.0 ZONE 9
 POINT COMBINED FACTOR = 0.99964631
 ESTIMATED HORIZONTAL ABSOLUTE ACCURACY IS 0.07m



TIES TO PRESENT NATURAL BOUNDARY FROM IP "A"

POINT	BEARING	DISTANCE
"B"	273°21'	7.4
"C"	272°31'	5.9
"D"	290°25'	6.6
"E"	295°18'	6.4
"F"	322°45'	5.9
"G"	330°52'	6.8
"H"	0°52'	7.8
"I"	0°13'	10.3
"J"	354°21'	10.8
"K"	353°04'	17.2
"L"	353°40'	18.1
"M"	352°54'	18.6
"N"	356°36'	19.5
"O"	1°05'	18.7
"P"	343°	20.3
"Q"	18°55'	25.4
"R"	15°18'	28.1
"S"	18°28'	30.1
"T"	17°02'	32.1
"U"	11°29'	32.2
"V"	9°53'	33.6
"W"	7°20'	33.9
"X"	6°25'	35.1
"Y"	319°00'	6.7
"Z"	352°54'	18.6
"AA"	356°36'	19.5
"AB"	1°05'	18.7
"AC"	343°	20.3
"AD"	18°55'	25.4
"AE"	15°18'	28.1
"AF"	18°28'	30.1
"AG"	17°02'	32.1
"AH"	11°29'	32.2
"AI"	9°53'	33.6
"AJ"	7°20'	33.9
"AK"	6°25'	35.1
"AL"	319°00'	6.7
"AM"	352°54'	18.6
"AN"	356°36'	19.5
"AO"	1°05'	18.7
"AP"	350°56'	30.2
"AQ"	352°04'	23.1
"AR"	351°25'	22.6
"AS"	351°42'	18.7
"AT"	352°03'	17.9
"AU"	350°12'	17.0
"AV"	351°55'	15.9
"AW"	351°35'	11.5
"AX"	343°39'	8.1
"AY"	333°59'	8.1
"AZ"	319°00'	6.7
"BA"	305°36'	7.0
"BB"	305°28'	7.5
"BC"	285°18'	7.8
"BD"	280°16'	7.7