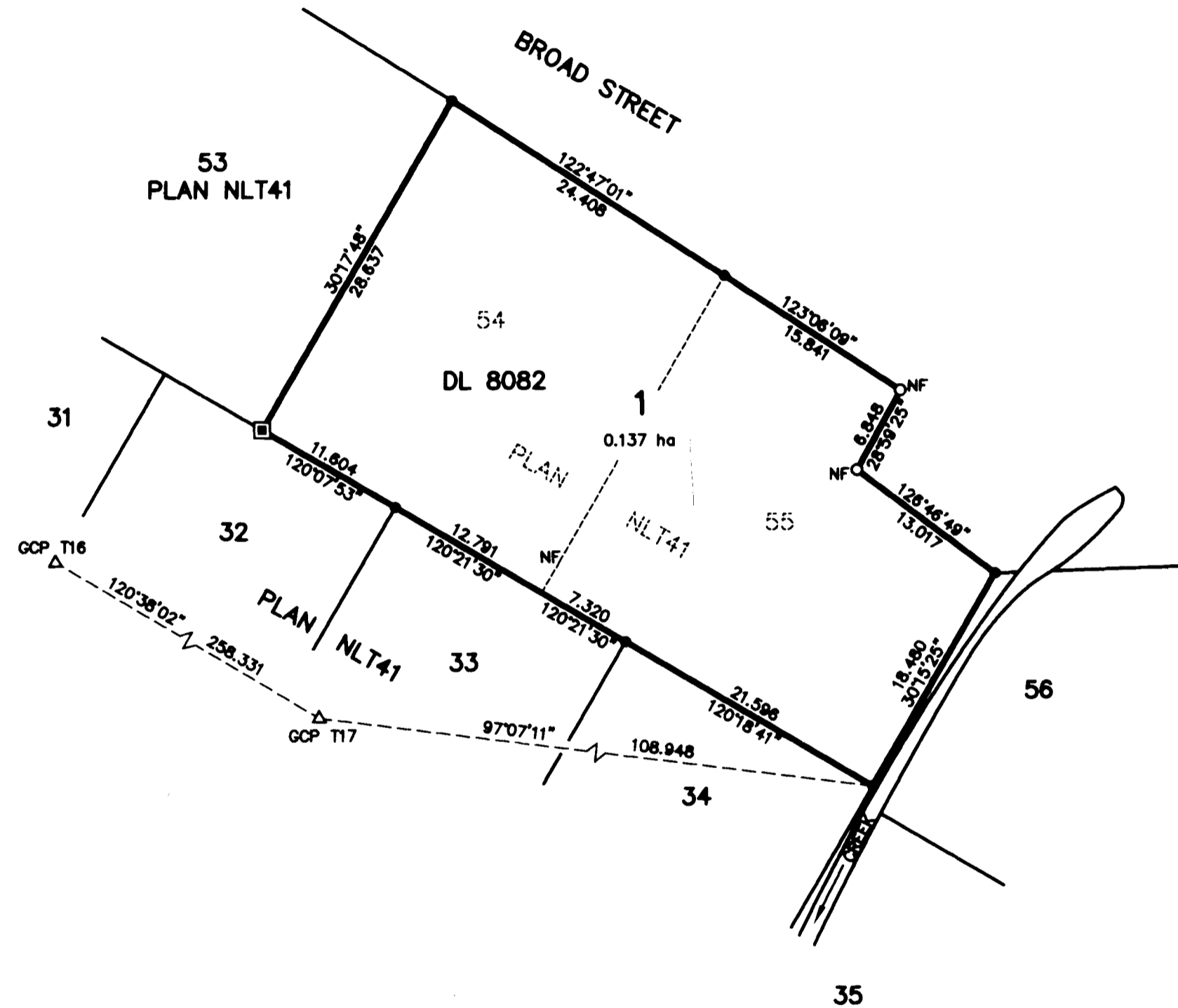


NISGA'A
LAND
TITLE
OFFICE

PLAN NLT 44

DEPOSITED IN THE NISGA'A LAND TITLE OFFICE
AT GITLAXT'AAMKS, BC
THIS 16 DAY OF September 2022

Diane Crady
REGISTRAR



REFERENCE PLAN OF CONSOLIDATION OF
LOTS 54 AND 55, DISTRICT LOT 8082,
RANGE 5, COAST DISTRICT,
PLAN NLT41, GINGOLX VILLAGE LANDS.
PURSUANT TO S.84(1)(b) NISGA'A LAND TITLE ACT.
BCGS 1031.091

SCALE 1:400



THE INTENDED PLOT SIZE OF THIS PLAN IS 550 mm IN WIDTH BY
432 mm IN HEIGHT (ANSI C) WHEN PLOTTED AT A SCALE OF 1:400.
THIS PLAN LIES WITHIN THE REGIONAL DISTRICT OF KITMAT STIKINE.

LEGEND

GRID BEARINGS ARE DERIVED
FROM GNSS OBSERVATIONS AND ARE REFERRED TO
THE CENTRAL MERIDIAN OF UTM ZONE 9.

THE UTM COORDINATES AND ESTIMATED ABSOLUTE ACCURACY ACHIEVED
ARE DERIVED FROM NRCAN'S PPP SERVICE.

THIS PLAN SHOWS HORIZONTAL GROUND LEVEL DISTANCES, UNLESS OTHERWISE
SPECIFIED. TO COMPUTE GRID DISTANCES, MULTIPLY GROUND LEVEL DISTANCES
BY THE AVERAGE COMBINED FACTOR OF 0.99984631. THE AVERAGE COMBINED FACTOR
HAS BEEN DETERMINED BASED ON AN ELLIPSOIDAL ELEVATION OF -2.3 METRES.

- DENOTES DOMINION IRON POST FOUND
- DENOTES STANDARD IRON POST FOUND
- DENOTES STANDARD IRON POST SET
- GCP T16 △ DENOTES GNSS CONTROL POINT AND IDENTIFIER

GCP T16
NORTHING: 6,094,566.55m
EASTING: 438,580.08m
DATUM: NAD83 (CSRS) 2002.0 ZONE 9
POINT COMBINED FACTOR = 0.99984662
ESTIMATED ABSOLUTE ACCURACY IS 0.07m

GCP T17
NORTHING: 6,094,434.97m
EASTING: 438,802.27m
DATUM: NAD83 (CSRS) 2002.0 ZONE 9
POINT COMBINED FACTOR = 0.99984631
ESTIMATED ABSOLUTE ACCURACY IS 0.07m

I, DAVID J. HARDWICKE, A BRITISH COLUMBIA LAND SURVEYOR, CERTIFY THAT
I WAS PRESENT AT AND PERSONALLY SUPERINTENDED THE SURVEY REPRESENTED
BY THIS PLAN, AND THAT THE SURVEY AND PLAN ARE CORRECT.
THE FIELD SURVEY WAS COMPLETED ON THE 27th DAY OF MAY, 2022.
THE PLAN WAS COMPLETED AND CHECKED, AND THE CHECKLIST FILED UNDER
#284303, ON THE 1st DAY OF SEPTEMBER, 2022.

W. Hardwicke
DAVID J. HARDWICKE, BCLS (727)