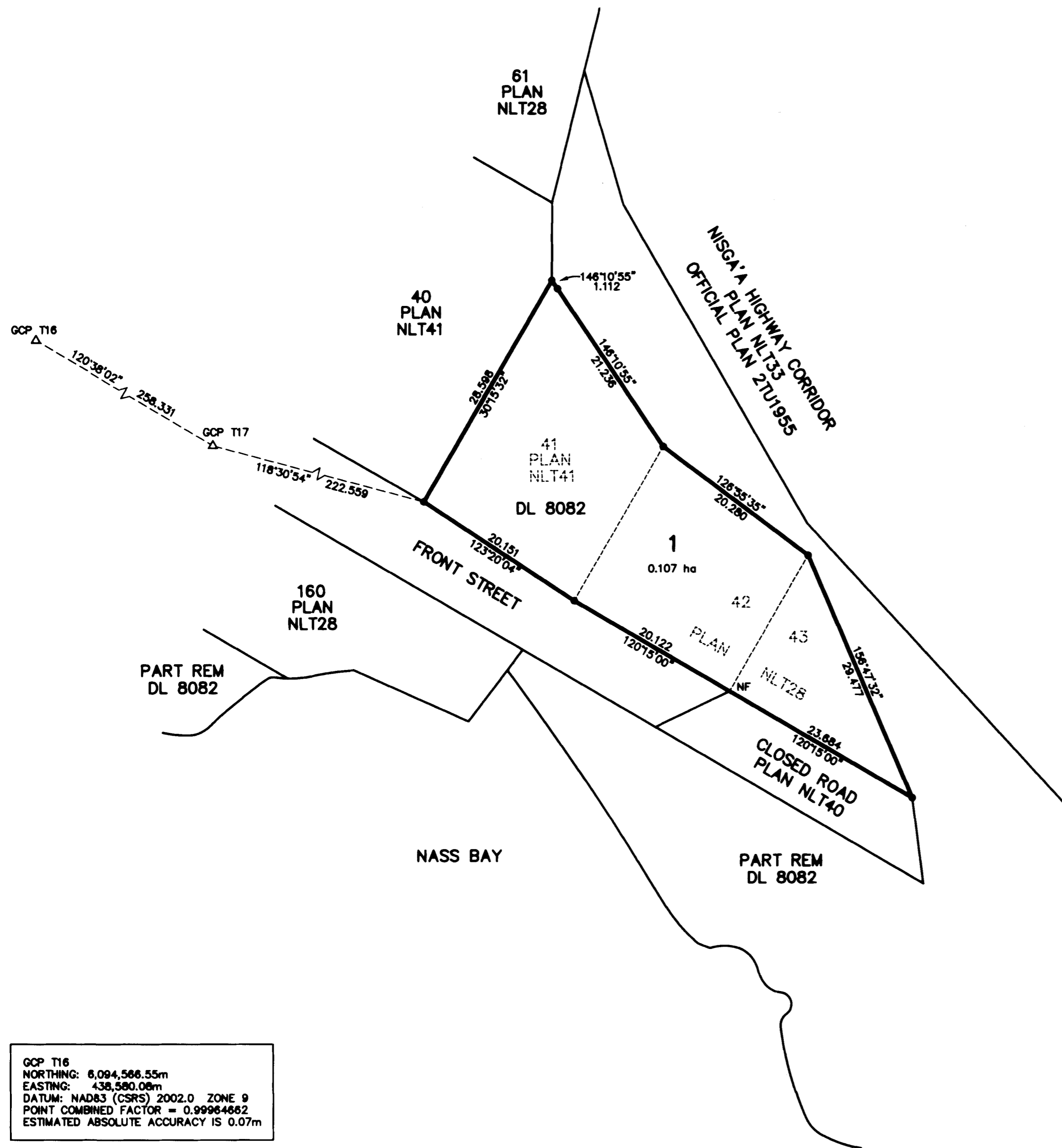


NISGA'A  
LAND  
TITLE  
OFFICE

PLAN NLT 45

DEPOSITED IN THE NISGA'A LAND TITLE OFFICE  
AT GITLAGT'AAMKKS, BC  
THIS 16 DAY OF January 2022

Diane Grogg  
REGISTRAR

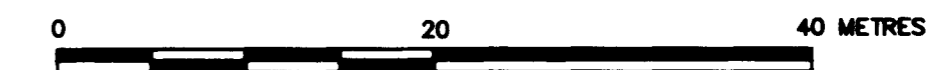


REFERENCE PLAN OF CONSOLIDATION OF  
LOT 41, PLAN NLT41 AND  
LOTS 42 AND 43, PLAN NLT28,  
DISTRICT LOT 8082,  
RANGE 5, COAST DISTRICT,  
GINCOLX VILLAGE LANDS.

PURSUANT TO S.84(1)(b) NISGA'A LAND TITLE ACT.

BCGS 1031.091

SCALE 1:400



THE INTENDED PLOT SIZE OF THIS PLAN IS 559 mm IN WIDTH BY  
432 mm IN HEIGHT (ANSI C) WHEN PLOTTED AT A SCALE OF 1:400.

THIS PLAN LIES WITHIN THE REGIONAL DISTRICT OF KITMAT STIKINE.

**LEGEND**

GRID BEARINGS ARE DERIVED  
FROM GNSS OBSERVATIONS AND ARE REFERRED TO  
THE CENTRAL MERIDIAN OF UTM ZONE 9.

THE UTM COORDINATES AND ESTIMATED ABSOLUTE ACCURACY ACHIEVED  
ARE DERIVED FROM NRCAN'S PPP SERVICE.

THIS PLAN SHOWS HORIZONTAL GROUND LEVEL DISTANCES, UNLESS OTHERWISE  
SPECIFIED. TO COMPUTE GRID DISTANCES, MULTIPLY GROUND LEVEL DISTANCES  
BY THE AVERAGE COMBINED FACTOR OF 0.99964631. THE AVERAGE COMBINED FACTOR  
HAS BEEN DETERMINED BASED ON AN ELLIPSOIDAL ELEVATION OF -2.3 METRES.

- DENOTES STANDARD IRON POST FOUND
- GCP T16 △ DENOTES GNSS CONTROL POINT AND IDENTIFIER

GCP T16  
NORTHING: 6,094,566.55m  
EASTING: 438,580.08m  
DATUM: NAD83 (CSRS) 2002.0 ZONE 9  
POINT COMBINED FACTOR = 0.99964662  
ESTIMATED ABSOLUTE ACCURACY IS 0.07m

GCP T17  
NORTHING: 6,094,434.97m  
EASTING: 438,802.27m  
DATUM: NAD83 (CSRS) 2002.0 ZONE 9  
POINT COMBINED FACTOR = 0.99964631  
ESTIMATED ABSOLUTE ACCURACY IS 0.07m

I, DAVID J. HARDWICKE, A BRITISH COLUMBIA LAND SURVEYOR, CERTIFY THAT  
I WAS PRESENT AT AND PERSONALLY SUPERINTENDED THE SURVEY REPRESENTED  
BY THIS PLAN, AND THAT THE SURVEY AND PLAN ARE CORRECT.  
THE FIELD SURVEY WAS COMPLETED ON THE 27th DAY OF MAY, 2022.  
THE PLAN WAS COMPLETED AND CHECKED, AND THE CHECKLIST FILED UNDER  
#264305, ON THE 1st DAY OF SEPTEMBER, 2022.

David J. Hardwicke  
DAVID J. HARDWICKE, BCLS (727)

ALLNORTH LAND SURVEYORS  
TERRACE, B.C.

File: 22013788.dwg