

PLAN OF SURVEY OF
DISTRICT LOT 7446,
CASSIAR DISTRICT.

BCGS 103P.002

SCALE 1:4000



THE INTENDED PLOT SIZE OF THIS PLAN IS 559 mm IN WIDTH BY 884 mm IN HEIGHT (ANSI D) WHEN PLOTTED AT A SCALE OF 1:4000. THIS PLAN LIES WITHIN THE REGIONAL DISTRICT OF KITMAT-STIKINE.

LEGEND

GRID BEARINGS ARE DERIVED FROM GNSS OBSERVATIONS AND ARE REFERRED TO THE CENTRAL MERIDIAN OF UTM ZONE 9.

THE UTM COORDINATES AND ESTIMATED ABSOLUTE ACCURACY ACHIEVED ARE DERIVED FROM NRCAN'S PPP SERVICE.

THIS PLAN SHOWS HORIZONTAL GROUND LEVEL DISTANCES, UNLESS OTHERWISE SPECIFIED. TO COMPUTE GRID DISTANCES, MULTIPLY GROUND LEVEL DISTANCES BY THE AVERAGE COMBINED FACTOR OF 0.99961055. THE AVERAGE COMBINED FACTOR HAS BEEN DETERMINED BASED ON AN ELLIPSOIDAL ELEVATION OF 113 METRES.

- ⊙ DENOTES STANDARD CONCRETE POST FOUND
- DENOTES STANDARD IRON POST FOUND
- ⊕ DENOTES STANDARD CAPPED POST FOUND
- ⊗ DENOTES STANDARD CAPPED POST SET
- GCP CP1013 DENOTES GEODETIC CONTROL POINT AND IDENTIFIER
- MRP DENOTES METAL REFERENCE POST
- DNCO DENOTES DID NOT CUT OUT
- CP DENOTES STANDARD CAPPED POST
- BT DENOTES BEARING TREE
- Mkd DENOTES MARKED

THIS PLAN SHOWS 1 WITNESS (WT) POST WHICH WAS NOT SET AT THE TRUE CORNER.

BEARINGS TO BEARING TREES ARE MAGNETIC. DISTANCES TO BEARING TREES ARE SLOPE DISTANCES UNLESS OTHERWISE NOTED.

THE ASSOCIATION OF BC LAND SURVEYORS HAS GRANTED RELIEF FROM RULE 2-10(6) AS IT RELATES TO POSTING INTERMEDIATE LOCATIONS ON LINES EXCEEDING 1200m, AND FROM RULE 6-4(1) AS IT PERTAINS TO SETTING MARKER POSTS OR CUTTING AND CLEARING BOUNDARY LINES.

THE MONUMENTATION ON THIS SURVEY IS APPROVED THIS DAY OF November, 2022.

P. E. Thomson
SURVEYOR GENERAL
FILE #0889369

I, PETER E. THOMSON, A BRITISH COLUMBIA LAND SURVEYOR, CERTIFY THAT I WAS PRESENT AT AND PERSONALLY SUPERINTENDED THE SURVEY REPRESENTED BY THIS PLAN, AND THAT THE SURVEY AND PLAN ARE CORRECT. THE FIELD SURVEY WAS COMPLETED ON THE 15th DAY OF DECEMBER, 2021. THE PLAN WAS COMPLETED AND CHECKED, AND THE CHECKLIST FILED UNDER #264784, ON THE 17th DAY OF SEPTEMBER, 2022.

P. E. Thomson
PETER E. THOMSON, BCLS (472)

NISGA'A REGISTRY PLAN NR 83



Manuel J. L.
Director of Lands and Resources

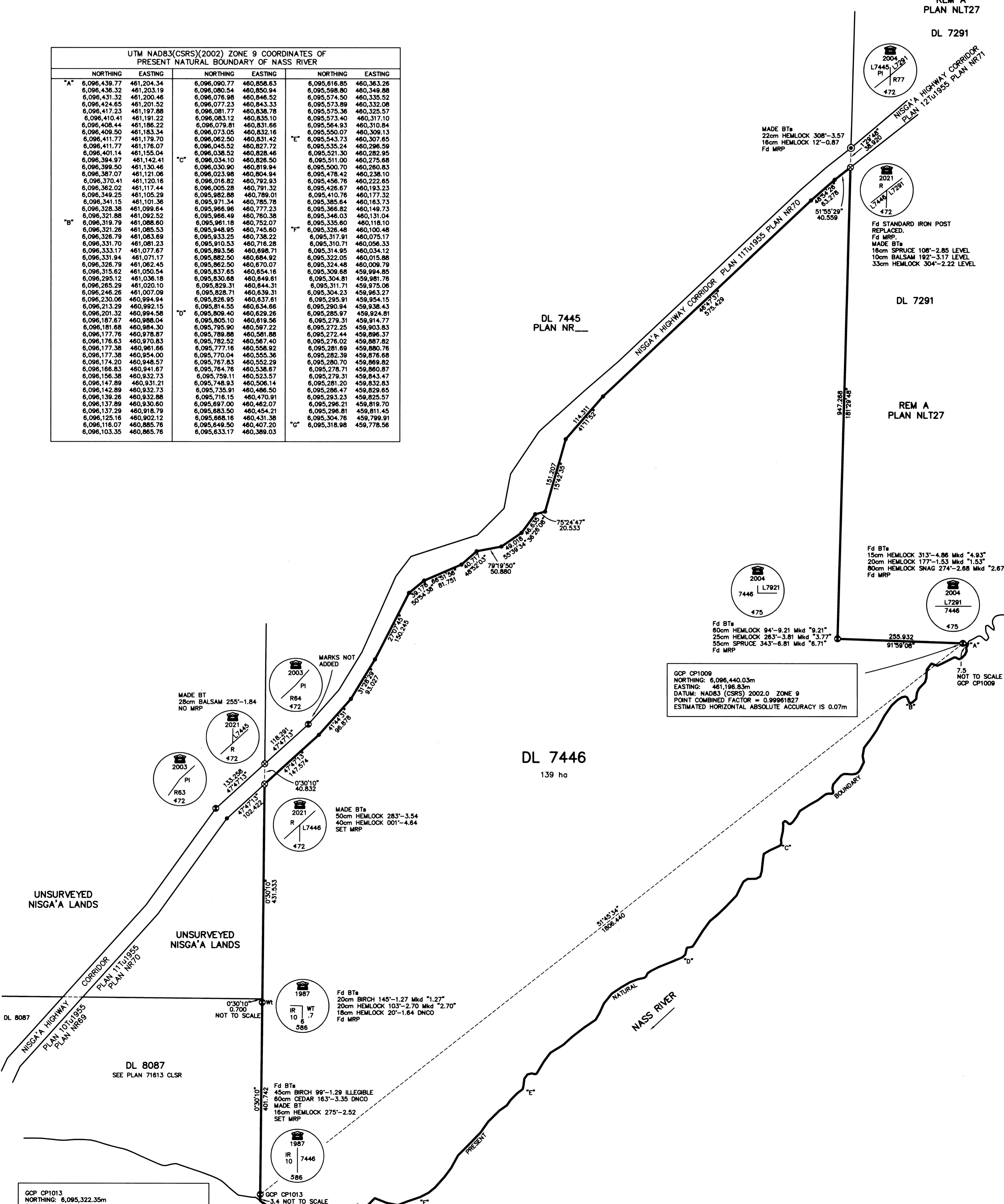


NISGA'A LAND TITLE OFFICE

PLAN NLT 50
DEPOSITED IN THE NISGA'A LAND TITLE OFFICE
AT GITLAXT'AAMIKS BC
THIS 3 DAY OF APRIL 2023

[Signature]
Registrar

UTM NAD83(CSRS)(2002) ZONE 9 COORDINATES OF PRESENT NATURAL BOUNDARY OF NASS RIVER						
	NORTHING	EASTING	NORTHING	EASTING	NORTHING	EASTING
"A"	6,096,439.77	461,204.34	6,096,090.77	460,858.63	6,095,616.85	460,363.26
	6,096,436.32	461,203.19	6,096,080.54	460,850.94	6,095,598.80	460,349.88
	6,096,431.32	461,200.46	6,096,076.96	460,848.52	6,095,574.50	460,335.52
	6,096,424.65	461,201.52	6,096,071.23	460,843.33	6,095,573.89	460,332.08
	6,096,417.23	461,197.88	6,096,061.77	460,838.78	6,095,575.36	460,325.57
	6,096,410.41	461,191.22	6,096,053.12	460,835.10	6,095,573.40	460,317.10
	6,096,408.44	461,186.22	6,096,049.81	460,831.66	6,095,564.93	460,310.84
	6,096,409.50	461,183.34	6,096,043.05	460,828.16	6,095,550.07	460,306.13
	6,096,411.77	461,179.70	6,096,042.50	460,831.42	6,095,543.73	460,307.65
	6,096,411.77	461,176.07	6,096,045.52	460,827.72	6,095,535.24	460,296.59
	6,096,401.14	461,155.04	6,096,038.52	460,828.46	6,095,521.30	460,282.95
	6,096,394.97	461,142.41	6,096,034.10	460,826.50	6,095,511.00	460,275.88
	6,096,399.50	461,130.46	6,096,030.90	460,819.94	6,095,500.70	460,280.83
	6,096,387.07	461,121.06	6,096,023.98	460,804.94	6,095,478.42	460,238.10
	6,096,370.41	461,120.16	6,096,016.82	460,792.93	6,095,456.76	460,222.65
	6,096,362.02	461,117.44	6,096,005.28	460,791.32	6,095,426.67	460,193.23
	6,096,349.25	461,105.29	6,095,992.88	460,789.01	6,095,410.76	460,177.32
	6,096,341.15	461,101.36	6,095,971.34	460,785.78	6,095,385.84	460,163.73
	6,096,328.38	461,099.64	6,095,966.96	460,777.23	6,095,366.82	460,149.73
	6,096,321.88	461,092.52	6,095,966.49	460,760.38	6,095,346.03	460,131.04
"B"	6,096,319.79	461,088.60	6,095,961.18	460,752.07	6,095,335.60	460,118.10
	6,096,321.26	461,085.53	6,095,948.95	460,745.80	6,095,326.48	460,100.48
	6,096,326.79	461,083.69	6,095,933.25	460,738.22	6,095,317.91	460,075.17
	6,096,331.70	461,081.23	6,095,910.53	460,716.28	6,095,310.71	460,056.33
	6,096,333.17	461,077.67	6,095,893.56	460,698.71	6,095,314.95	460,034.12
	6,096,331.94	461,071.17	6,095,882.50	460,684.92	6,095,322.05	460,015.88
	6,096,326.79	461,062.45	6,095,862.50	460,670.07	6,095,324.48	460,009.79
	6,096,315.62	461,050.54	6,095,837.65	460,654.16	6,095,309.68	459,994.85
	6,096,295.12	461,036.18	6,095,830.68	460,649.61	6,095,304.81	459,981.76
	6,096,265.29	461,020.10	6,095,829.31	460,644.31	6,095,311.71	459,975.06
	6,096,246.26	461,007.09	6,095,828.71	460,639.31	6,095,304.23	459,963.27
	6,096,230.06	460,994.94	6,095,826.95	460,637.61	6,095,295.91	459,954.15
	6,096,213.29	460,992.15	6,095,814.55	460,634.66	6,095,290.94	459,938.43
	6,096,201.32	460,994.58	6,095,809.40	460,629.26	6,095,285.97	459,924.81
	6,096,187.67	460,988.04	6,095,805.10	460,619.56	6,095,279.31	459,914.77
	6,096,181.68	460,984.30	6,095,795.90	460,597.22	6,095,272.25	459,903.83
	6,096,177.76	460,978.87	6,095,789.86	460,581.68	6,095,272.44	459,896.37
	6,096,176.63	460,970.83	6,095,782.52	460,567.40	6,095,276.02	459,887.82
	6,096,177.38	460,961.66	6,095,777.16	460,558.92	6,095,281.69	459,880.76
	6,096,177.38	460,954.00	6,095,770.04	460,555.36	6,095,282.39	459,876.68
	6,096,174.20	460,948.57	6,095,767.83	460,552.29	6,095,280.70	459,869.82
	6,096,166.83	460,941.67	6,095,764.76	460,538.67	6,095,278.71	459,860.87
	6,096,156.38	460,932.73	6,095,759.11	460,533.57	6,095,279.31	459,843.47
	6,096,147.89	460,931.21	6,095,748.93	460,506.14	6,095,281.20	459,832.63
	6,096,142.89	460,932.73	6,095,735.91	460,486.50	6,095,286.47	459,829.85
	6,096,139.26	460,932.88	6,095,716.15	460,470.91	6,095,293.23	459,825.57
	6,096,137.89	460,930.60	6,095,697.00	460,462.07	6,095,296.21	459,819.70
	6,096,137.29	460,918.79	6,095,683.50	460,454.21	6,095,296.81	459,811.45
	6,096,125.16	460,902.12	6,095,668.16	460,431.36	6,095,304.76	459,799.91
	6,096,116.07	460,885.76	6,095,649.50	460,407.20	6,095,318.98	459,778.56
	6,096,103.35	460,865.76	6,095,633.17	460,389.03		



GCP CP1013
NORTHING: 6,095,322.35m
EASTING: 459,778.59m
DATUM: NAD83 (CSRS) 2002.0 ZONE 9
POINT COMBINED FACTOR = 0.99961981
ESTIMATED HORIZONTAL ABSOLUTE ACCURACY IS 0.07m

ALLNORTH LAND SURVEYORS
TERRACE, B.C.
File: 2101643 DL7446.dwg